

CQM, INC.

Engineering – Survey – Material Testing

2679 Continental Drive Green Bay, Wisconsin 54311-6627

Phone: (920) 465-3911

Fax: (920) 465-3913

October 7, 2016

Mr. Geoffrey Strack, P.E.
SKB Environmental
251 Starkey Street
St. Paul, Minnesota 55107-1821

RE: CFR 257.60 Certification
 Phase 3
 SKB Lansing Landfill

Dear Mr. Strack:

CQM, INC. has provided a design of the base grades for Phase 3 Cell 1, for the SKB Lansing Landfill. The design base grades are illustrated on the attached Drawing No. 1. CQM, INC. has also received a groundwater surface map representing the high water table of the uppermost aquifer (April 13, 2015). The groundwater map was provided by Weaver Consultants Group. The groundwater map is illustrated on the attached Figure 1 prepared by Weaver Consultants Group and on the attached Drawing No. 1 prepared by CQM, INC.

CQM, INC. certifies that Phase 3 Cell 1 was constructed in accordance with the design base grades and that the design base grades comply with the locational requirement in CFR 257.60.

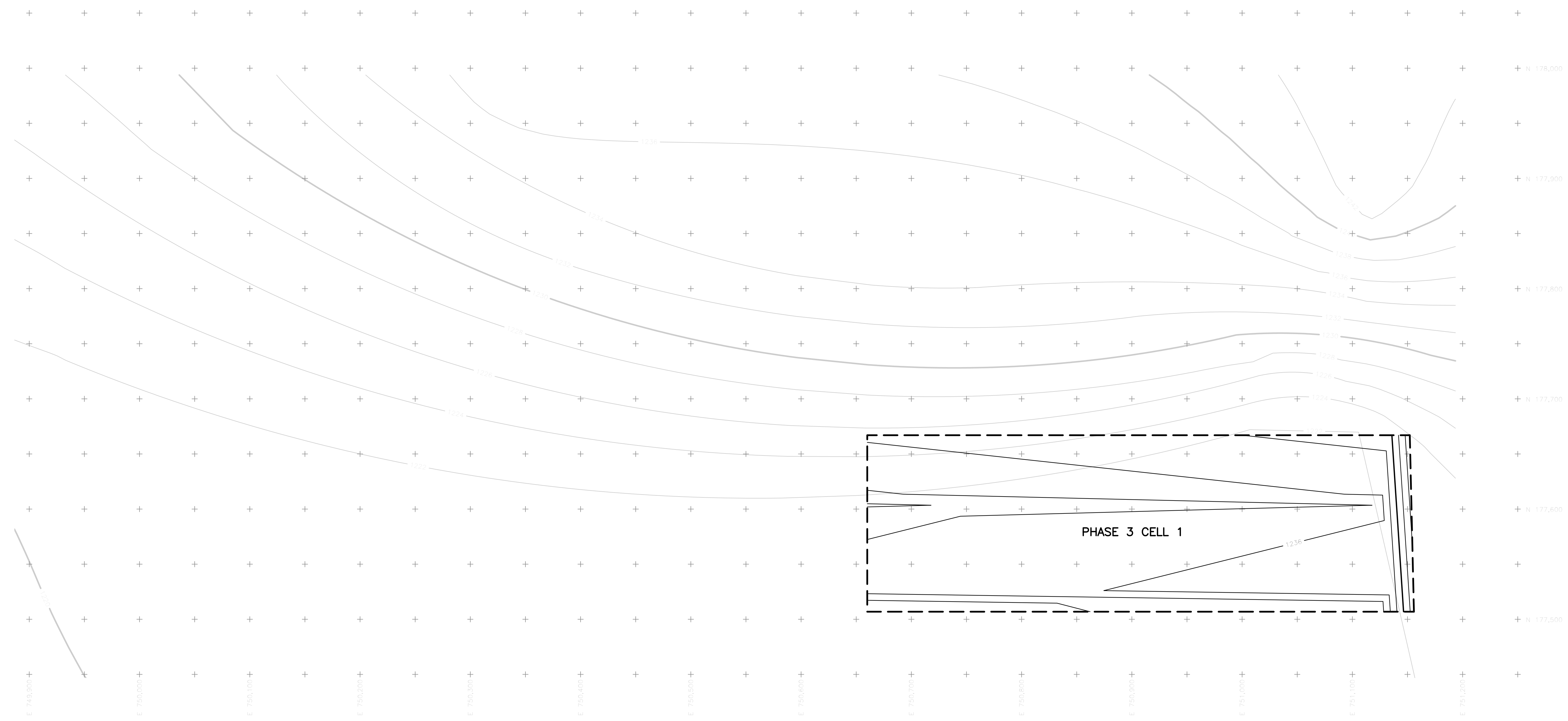
Sincerely,

CQM, INC.



Frank R. (Nick) Sturzl, P.E.
Project Manager

Attachments: Drawing Nos. 1 and 2
 Figure 1

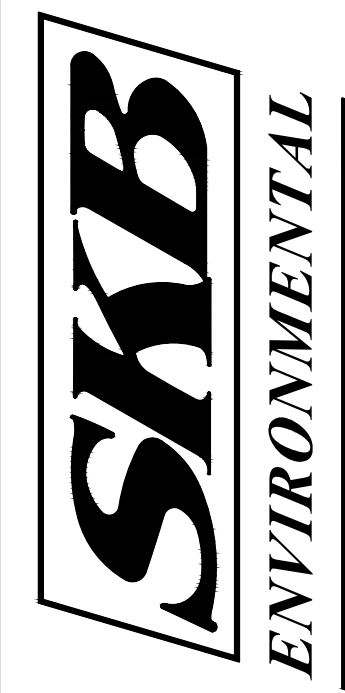


LEGEND
 - - - 780 HIGH GROUNDWATER CONTOURS (APRIL 2015)
 ——— 780 DESIGN BASE CONTOURS (TOP OF LINER)
 - - - - - PHASE 3 CELL 1 LINER LIMITS



RELEASE	DATE:	BY:
Project Review		
△		
△		
△		
△		
△		
△		

NO.	DATE:	BY:
DESCRIPTION		
REVISIONS		



CQM, INC.
 Engineering - Surveying - Material Testing
 2679 Continental Drive
 Green Bay, WI 54311

**Base Grades
 Phases 3 Cell 1**

SKB Landfill
 SKB Environmental, INC
 Lansing Township
 Mower County, Minnesota

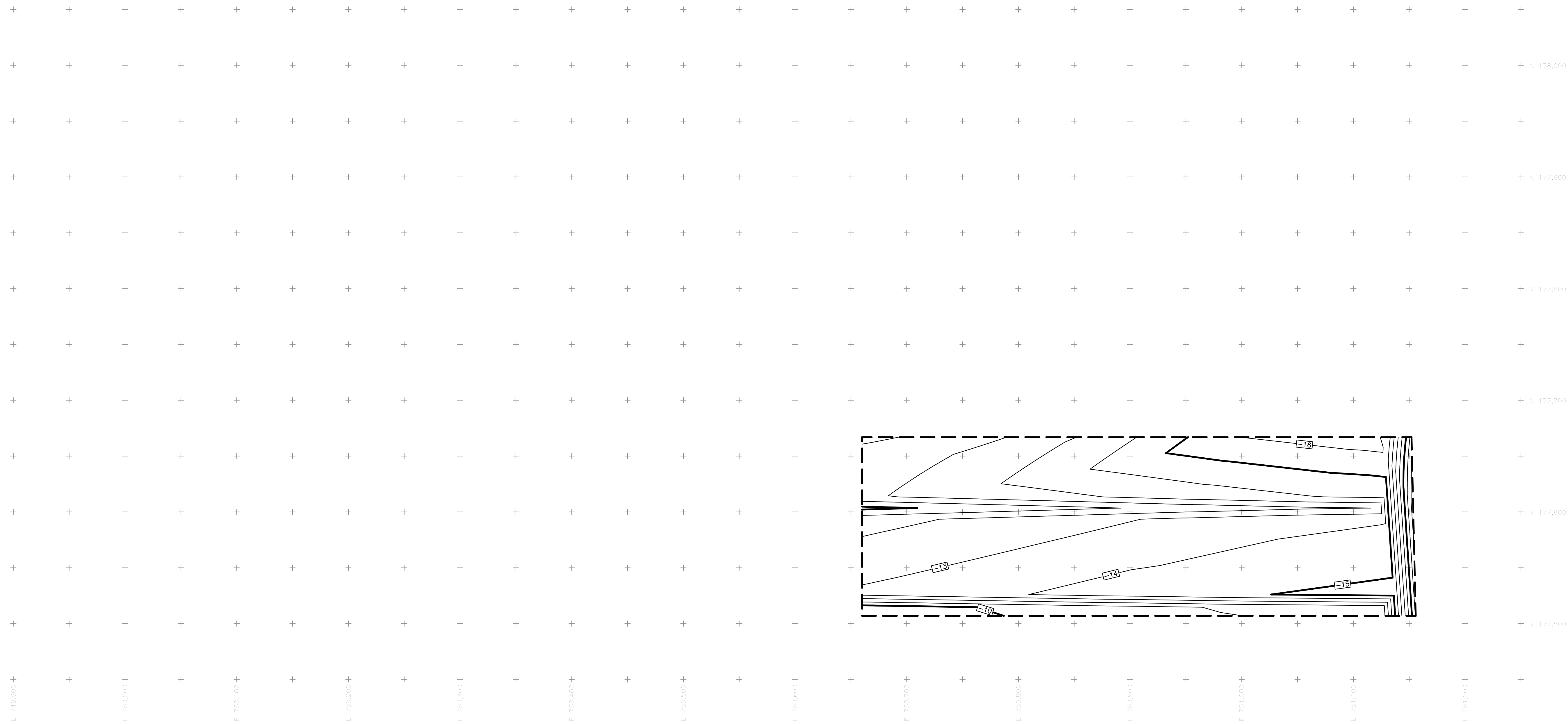
DRAWN BY: NGG

DATE: Oct. 2016

SCALE: 1" = 50'

DRAWING NO.

1

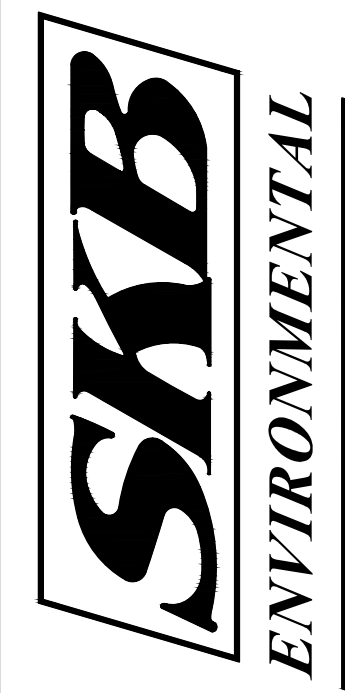


LEGEND
 -10- CUT/FILL (BASE VS HIGH GROUNDWATER)
 --- PHASE 3 CELL 1 LINER LIMITS



RELEASE	DATE:	BY:
Project Review		
△		
△		
△		
△		
△		
△		

NO.	DATE:	BY:
DESCRIPTION		
REVISIONS		

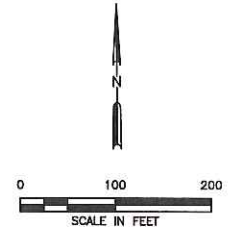
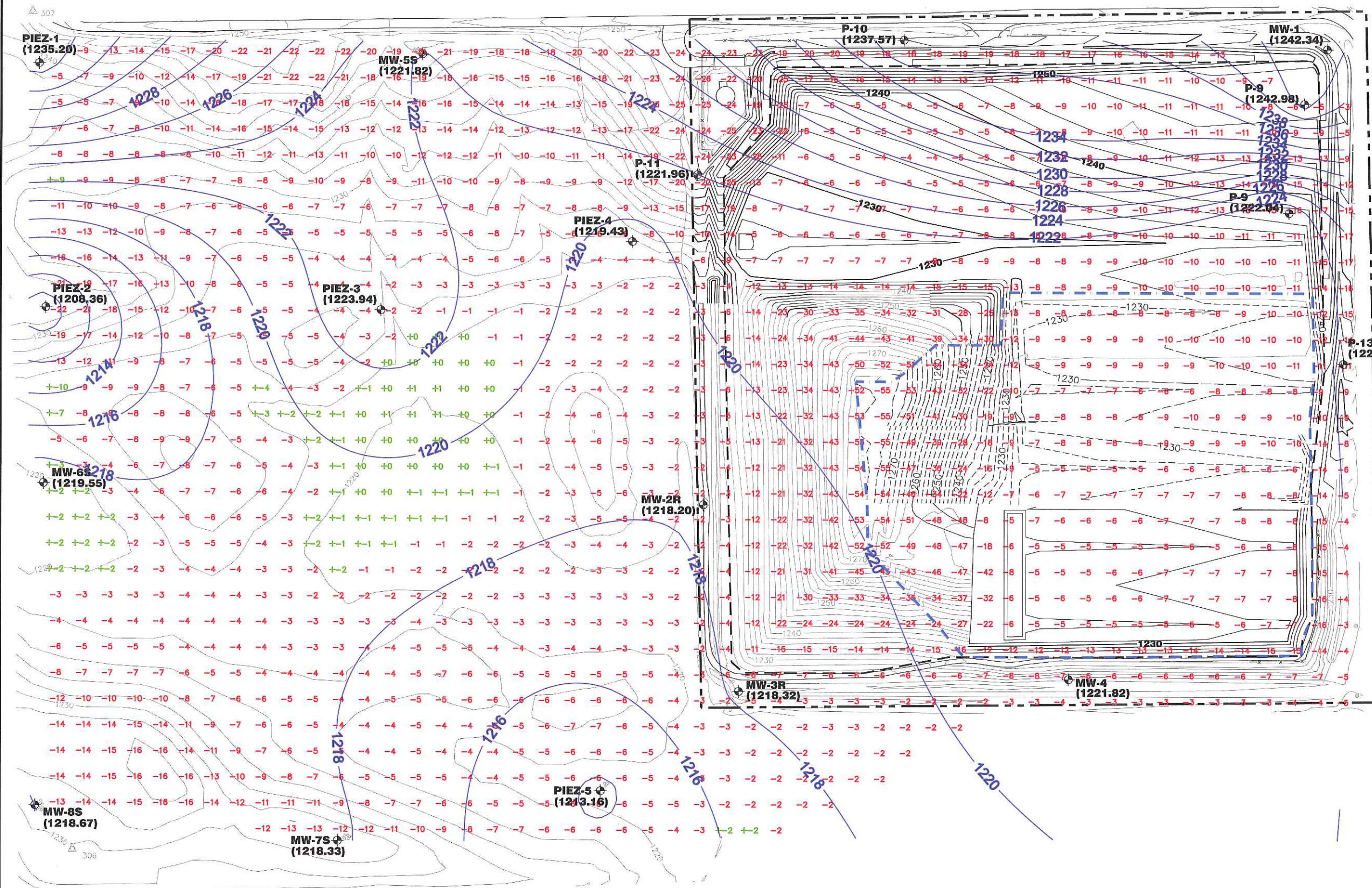


CQM, INC.
 Engineering - Surveying - Material Testing
 2679 Continental Drive
 Green Bay, WI 54311

**Base Grades vs Groundwater Isopach
 Phase 3 Cell 1**

SKB Lansing Landfill
 SKB Environmental, INC
 Lansing Township
 Mower County, Minnesota

DRAWN BY:	NGG
DATE:	Oct. 2016
SCALE:	1" = 50'
DRAWING NO.	2



LEGEND

- PROPERTY BOUNDARY
- PERMITTED LIMIT OF WASTE
- LIMIT OF CONSTRUCTED LINER
- NOVEMBER 2015 TOPOGRAPHY (SEE NOTE 1)
- ROADS
- AS-BUILT TOP OF LINER PLAN
- AS-BUILT TOP OF LINER PLAN
- HIGHEST MEASURED GROUNDWATER
- MW-2R (1220.80) MONITOR WELL OR PIEZOMETER WITH APRIL 2015 GROUNDWATER ELEVATION POSTED IN FT-MSL
- 9 DEPTH BETWEEN APRIL 2015 MEASURED GROUNDWATER AND TOP OF LINER/2015 TOPOGRAPHY

NOTES:

1. EXISTING CONTOURS AND ELEVATIONS PROVIDED BY THE CONTINENTAL MAPPING CONSULTANTS, INC. COMPILED FROM AERIAL PHOTOGRAPHY FLOWN NOVEMBER 2, 2015.
2. ONLY WATER TABLE MONITOR WELLS AND PIEZOMETERS HAVE BEEN CONSIDERED FOR GROUNDWATER ELEVATIONS.
3. HIGHEST WATER TABLE GROUNDWATER ELEVATIONS MEASURED ON APRIL 13, 2015.

DRAFT

<input type="checkbox"/> DRAFT <input checked="" type="checkbox"/> FOR INFORMATION PURPOSES ONLY <input type="checkbox"/> ISSUED FOR CONSTRUCTION	PREPARED FOR WASTE CONNECTIONS, INC.	SBK LANSING LANDFILL GROUNDWATER SEPARATION
DATE: 04/2016 FILE: 0601-662-11 CAD: 1-GROUNDWATER.DWG	DRAWN BY: SRF DESIGN BY: SRF REVIEWED BY: JAE	LANSING LANDFILL MOWER COUNTY, MINNESOTA
Weaver Consultants Group		WWW.WCGRP.COM
		FIGURE 1

P:\Groundwater\WC\Lansing\WORKING-JAE.dwg, jedwards, 1:2